

A model-based allocation approach for estimation of adult competency in small domains

Andreea L. Erciulescu, Tom Krenzke, Leyla Mohadjer,
Robert Fay, Westat

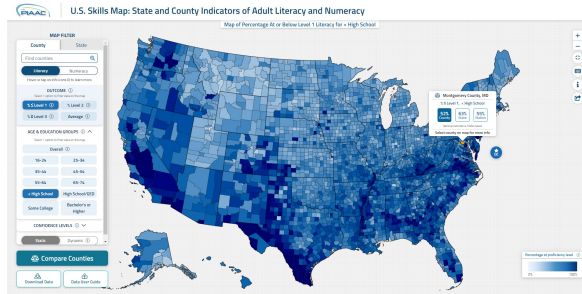
Weijia Ren, Meta; Jianzhu Li, FINRA

Federal Committee on Statistical Methodology (FCSM)
Research and Policy Conference 2022
October 25, 2022

Contribution: Official Statistics

Model-based domain-level literacy and numeracy estimates of average scores and at-level proportions

- Proficiency levels: At or Below Level 1 (0 - 225), At Level 2 (226 - 275), At or Above Level 3 (276 - 500)
- Domains: county/state x age/education group, county, state



Source: U.S. Skills Map: State and County Indicators of Adult Literacy and Numeracy [National Center for Education Statistics at the
Institute of Education Sciences]

Contribution: Resources

IES NCES

National Center for Education Statistics

Search

PROGRAM FOR THE INTERNATIONAL ASSESSMENT OF ADULT COMPETENCIES (PIAAC)

IAP

PIAAC

Publications & Products

Staff

Study Participants

U.S. State and County Estimates Resources

U.S. PIAAC Skills Map: State and County Indicators of Adult Literacy and Numeracy

The U.S. PIAAC Skills Map is an interactive data tool that provides state- and county-level data on the literacy and numeracy proficiency of adults ages 16-74 in all 50 states, all 3,141 counties, and the District of Columbia. The Skills Map also includes state-level model-based estimates for six age groups and four education groups.

[ACCESS THE TOOL >](#)

Summary of Estimates

[VIEW THE PDF >](#)

U.S. PIAAC Skills Map Brochure

[VIEW THE BROCHURE >](#)

Release Video: Closer to Home

[WATCH THE VIDEO >](#)

Skills Map Tutorial Video

[WATCH THE VIDEO >](#)

Skills Map Levels

[VIEW THE LEVELS >](#)

Small Area Estimation User's Guide

[VIEW THE GUIDE >](#)

State and County Estimation Methodology Reports

[VIEW THE REPORTS >](#)

State and County Estimates FAQs

[VIEW THE FAQs >](#)

Data

- Sparse survey sample at fine levels: 2012/2014/2017 U.S. Program for the International Assessment of Adult Competencies (PIAAC)

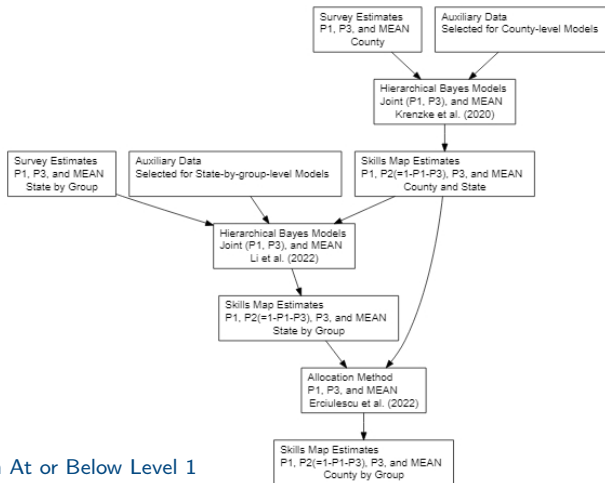
County-level sample summaries for age and education groups

Age/Education group	Number of counties* with sample data	Number of respondents		
		Minimum	Median	Maximum
16-24	172	1	10	82
25-34	177	1	11	96
35-44	180	1	9.5	56
45-54	178	1	10	72
55-64	180	1	10	45
65-74	176	1	6.5	31
Less than high school	175	1	8	67
High school diploma or GED	180	1	16	86
Some college	182	1	16	114
Bachelor's degree or higher	179	1	13	115

*There were 185 counties with sample data.

- Auxiliary information: American Community Survey (ACS)

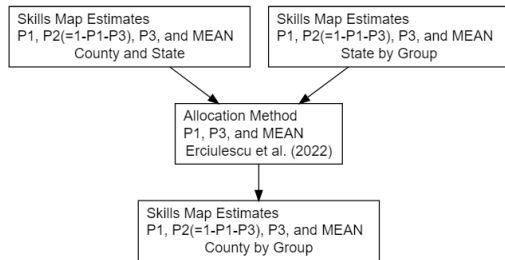
Overview of the Modeling Process



- ▶ P1 is the proportion At or Below Level 1
- ▶ P2 is the proportion At Level 2
- ▶ P3 is the proportion At or Above Level 3
- ▶ MEAN is the average score

Model-based Allocation

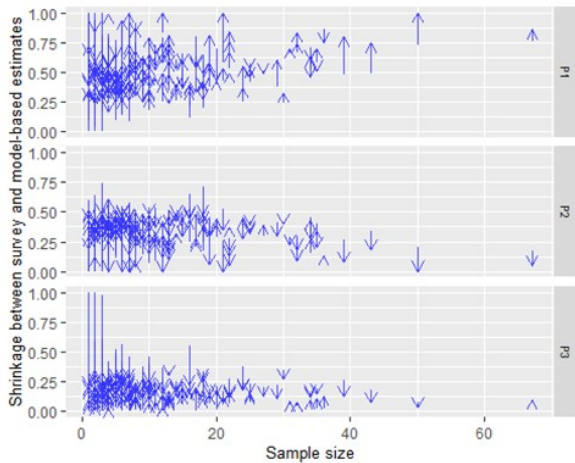
$$Y_{g,jk}^{(b)} := Y_{g,j}^{(b)} \frac{Y_{jk}^{(b)}}{Y_j^{(b)}}$$



- ▶ $g = 1, \dots, 10$ is an index for the age/education groups
- ▶ $j = 1, \dots, 51$ is an index for the states
- ▶ $k = 1, \dots, 3,142$ is an index for the counties
- ▶ $b = 1, \dots, 4,500$ is an index for the posterior samples
- ▶ Y is either P1, P3, or MEAN
- ▶ $Y_j^{(b)}$, $Y_{jk}^{(b)}$, $Y_{g,j}^{(b)}$, $Y_{g,jk}^{(b)}$ are the posterior samples for the county, state, state-by-group, and county-by-group quantities, respectively

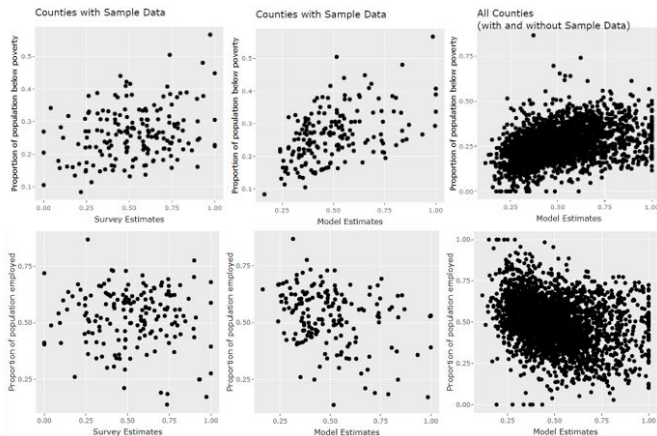
Selected Results: Shrinkage

Change in county-level estimates for literacy proportions of less than high school population



Selected Results: Comparability

County-level estimates for literacy proportions of less than high school population At or Below Level 1 versus ACS variables



Selected Results: Uncertainty

Credible interval (CI) widths and coefficients of variation (CV) for county-level model-based estimates for At or Below Level 1 literacy proportion of less than high school population

Set of Domains / Metric	Percentile of Empirical Distribution				
	20	40	50	60	80
All domains					
95% CI width (%)	21.1	23.4	24.5	25.9	29.4
CV (%)	10.7	12.1	12.9	14.0	17.7
Domains with sample data					
95% CI width (%)	19.6	21.5	22.7	24.0	27.9
CV (%)	10.3	11.6	12.3	12.8	16.3
Domains without sample data					
95% CI width (%)	21.2	23.5	24.7	25.9	29.5
CV (%)	10.7	12.1	13.0	14.1	17.7

Summary

- ▶ Model-based estimation at fine levels of aggregation
 - ▶ county by group, in addition to previous developments at state, state by group, and county
 - ▶ implausible results carried over from county and state estimation
- ▶ Consistency across levels of aggregation
 - ▶ county by group as allocation of state by group according to county-to-state ratio
 - ▶ no benchmarking
- ▶ Precision
 - ▶ county by group coefficients of variation mostly below 20%
- ▶ Official statistics
 - ▶ Skills Map

Remark. Modeling at the unit level or at the lowest level of aggregation (e.g., county by group) would provide unified frameworks for constructing estimates at all levels of aggregation (e.g., county by group $\xrightarrow{\text{aggregation}}$ county $\xrightarrow{\text{aggregation}}$ state, and county by group $\xrightarrow{\text{aggregation}}$ state by group). However, such approaches would require reliable aggregation weights, covariates, or survey direct estimates, which may not be available in practice.

Selected references

- Krenzke, T., Mohadjer, L., Li, J., Erciulescu, A., Fay, R., Ren, W., Van de Kerckhove, W., Li, L., and Rao, J.N.K. (2020). "Program for the International Assessment of Adult Competencies (PIAAC): State and County Estimation Methodology Report (NCES 2020-225)." U.S. Department of Education, National Center for Education Statistics. Washington, DC: U.S. Government Printing Office. Retrieved [10-26-2020] from <https://nces.ed.gov/pubsearch/pubsinfo.asp?pubid=2020225>.
- Li, J., Krenzke, T., Ren, W., Mohadjer, L., Fay, R., and Erciulescu, A. (2022). "Program for the International Assessment of Adult Competencies (PIAAC): State-level Estimation for Age and Education Groups Methodology Report (NCES 2022-050)." U.S. Department of Education, National Center for Education Statistics. Washington, DC: U.S. Government Printing Office. Retrieved [9-2-2022] from <https://nces.ed.gov/pubsearch/pubsinfo.asp?pubid=2022050>.
- Erciulescu, A., Ren, W., Li, J., Krenzke, T., Mohadjer, L., and Fay, R.(2022). "Program for the International Assessment of Adult Competencies (PIAAC): County-Level Estimation for Age and Education Groups Methodology Report (NCES 2023-004)." U.S. Department of Education, National Center for Education Statistics. Washington, DC: U.S. Government Publishing Office. Retrieved [10-3-2022] from <https://nces.ed.gov/pubsearch/pubsinfo.asp?pubid=2023004>.

Thank you!

AndreeaErciulescu@westat.com

Auxiliary Data Selected for County-level Models

Percentage of population ...

- ▶ age 25 and over with less than high school education
- ▶ age 25 and over with more than high school education
- ▶ below 100 percent of the poverty line
- ▶ Black or African American
- ▶ Hispanic
- ▶ civilian noninstitutionalized who has no health insurance coverage
- ▶ age 16 and over with service occupations

Auxiliary Data Selected for State-by-group-level Models: Education Groups

Percentage of population ...

- ▶ civilian noninstitutionalized who has no health insurance coverage
- ▶ below 100 percent of the poverty line
- ▶ age 16-24

Auxiliary Data Selected for State-by-group-level Models: Age Groups

Percentage of population ...

- ▶ with less than high school education
- ▶ with more than high school education
- ▶ below 100 percent of the poverty line
- ▶ age 16 and over with service occupations