

The Effect of Pandemic EBT on Measures of Food Hardship

Lauren Bauer • Krista Ruffini • Diane Whitmore Schanzenbach

Lauren Bauer

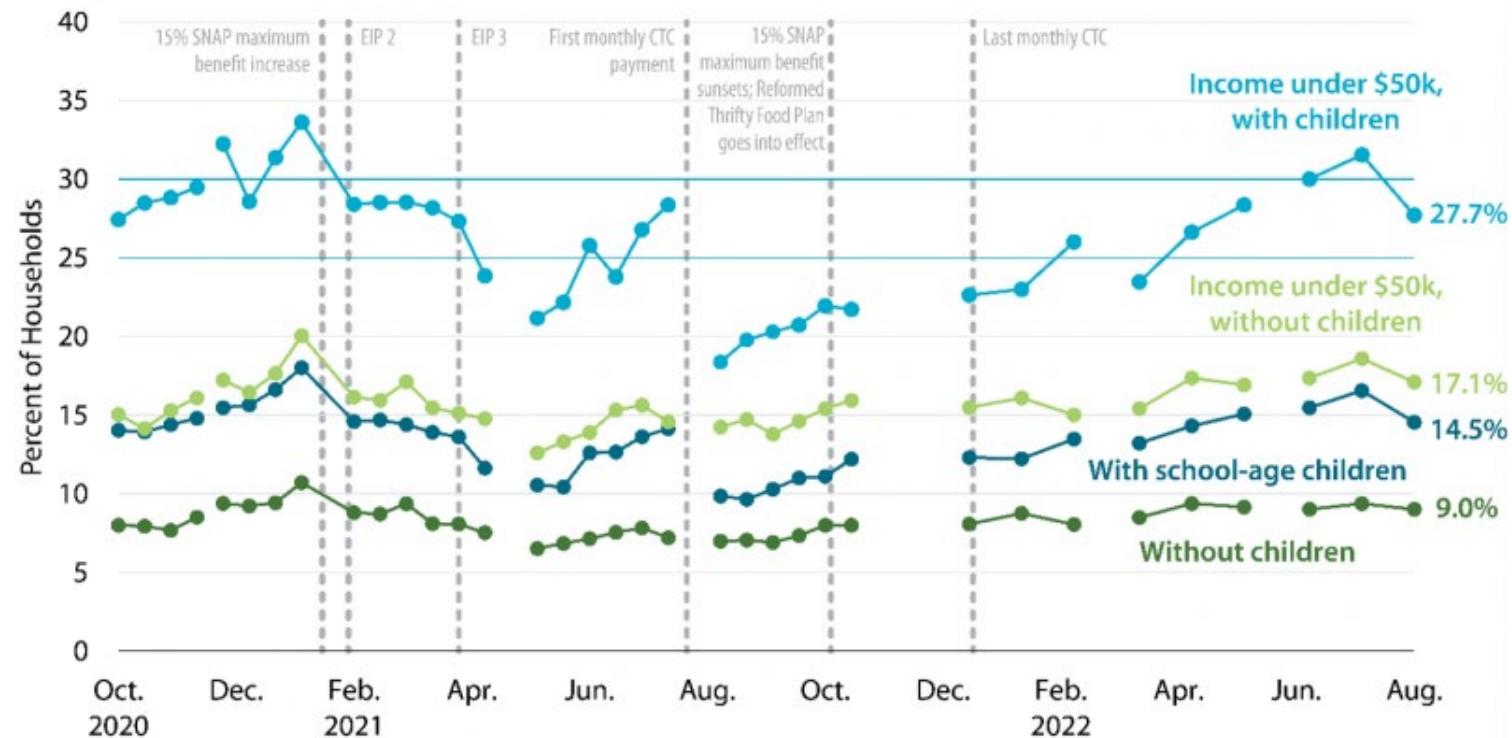
Fellow in Economic Studies | The Hamilton Project | The Brookings Institution

LBAUER@brookings.edu | www.hamiltonproject.org | www.brookings.edu

Food Hardship in the US 2020 -22

FIGURE 1.

Rates of Food Insufficiency, by Household Income and Presence of Children
(September 2020–July 2022)



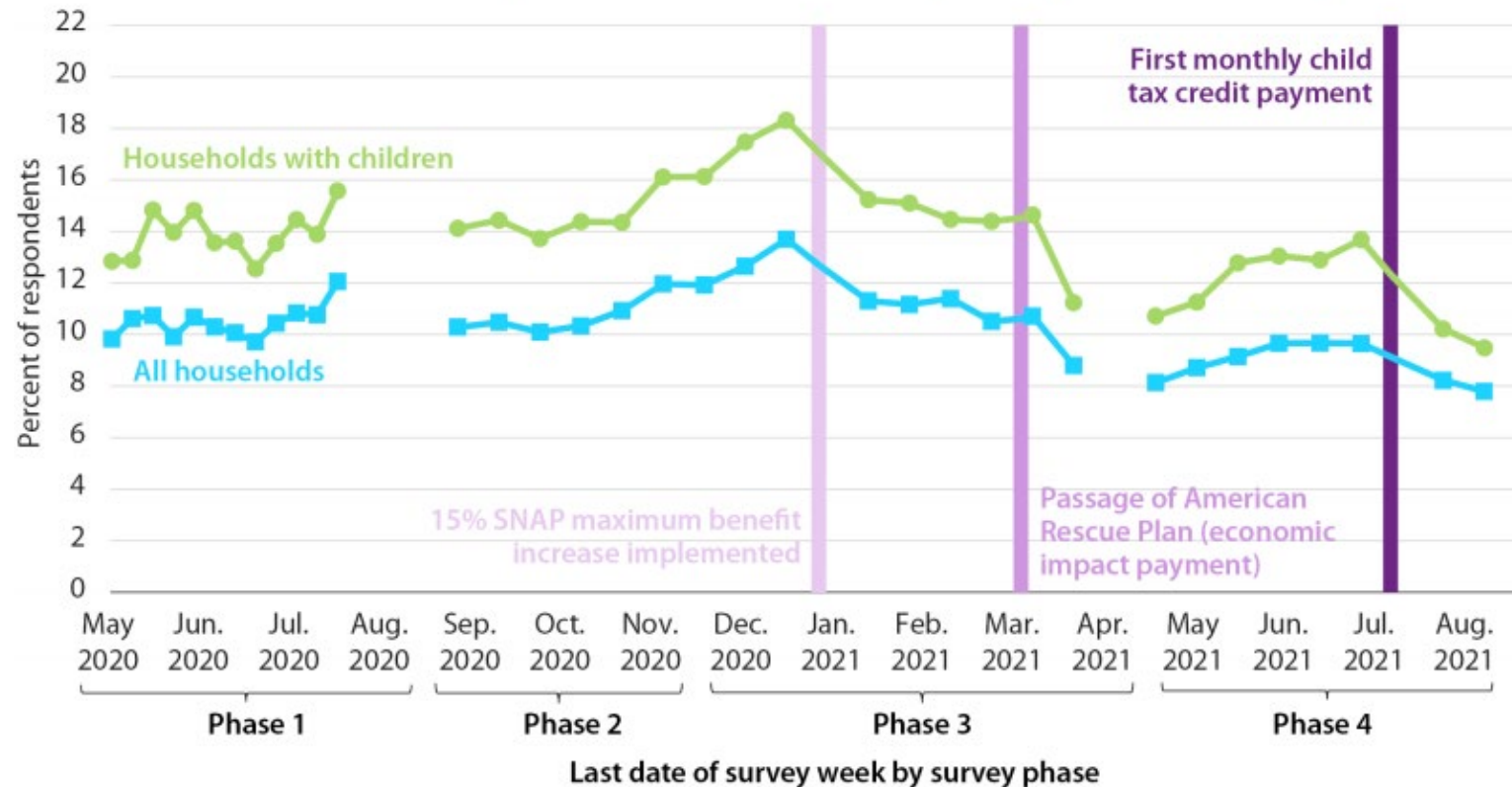
Source: Census Household Pulse Survey (2022); authors' calculations.

Note: The last data point represents week 48 of the Census Bureau's Household Pulse Survey, which spans July 27th–August 8th 2022.

Food Hardship, Pandemic EBT Evaluation Period

FIGURE 1.

Rates of Food Insufficiency in the Last Seven Days, May 2020 to August 2021



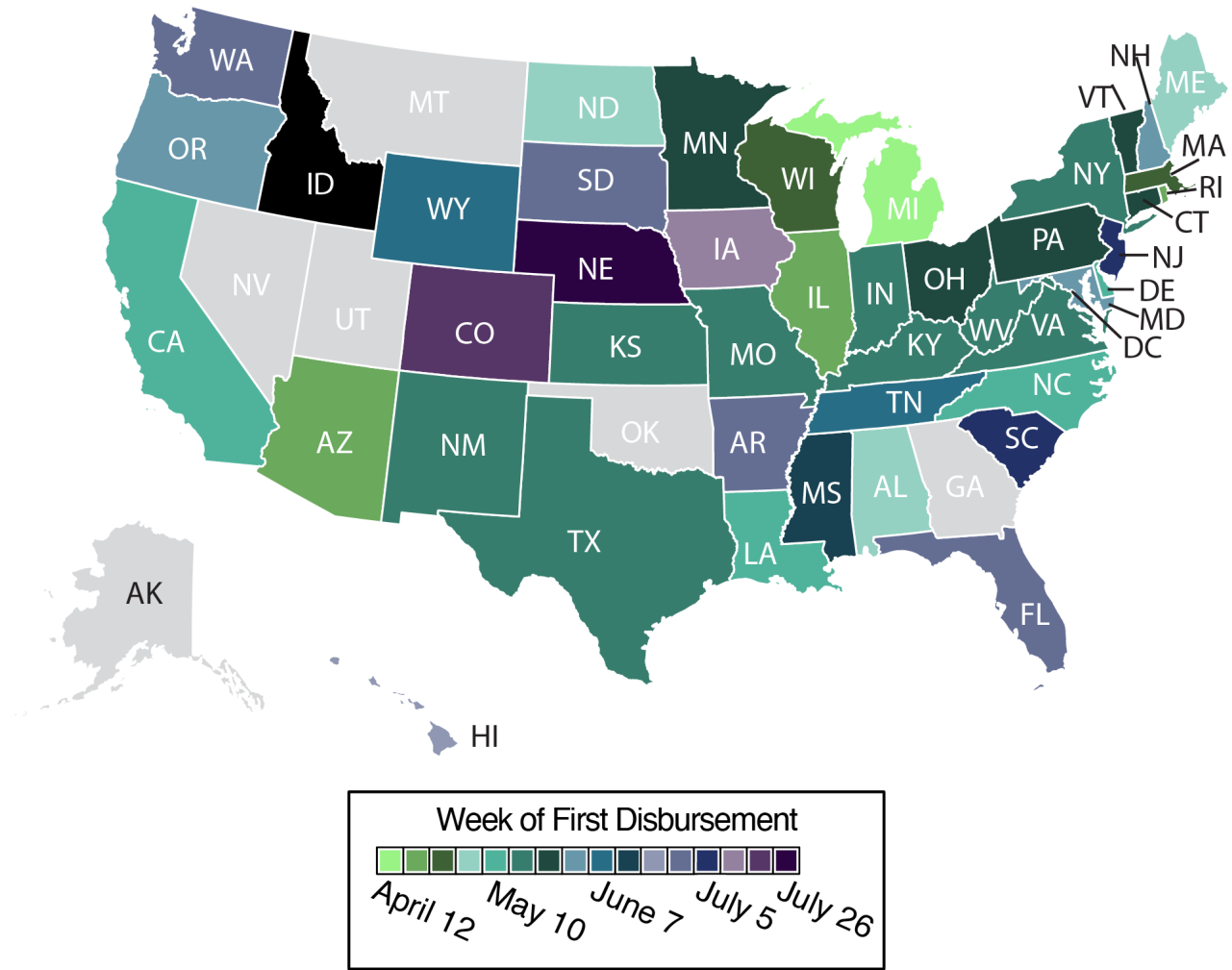
Source: Census Household Pulse Survey 2020–21; authors' calculations.

Note: The HPS asks respondents whether, in the past seven days, its household was able to consume the quantity and types of food it wanted; enough, but not of the type of food it wanted; sometimes was not able to eat enough; or often was not able to eat enough. We examine whether a household reports it was sometimes or often not able to get enough to eat in the previous seven days.

Pandemic EBT

- **Grocery vouchers for \$ value of school meals lost due to school closures (\approx \$6/day).**
- **Issued through EBT cards:**
 - **SNAP recipients: P-EBT automatically loaded to SNAP cards.**
 - **SNAP non-recipients: Often had to apply → disbursement delays.**
- **Each state had to develop implementation plan, apply, disburse benefits authorized period.**

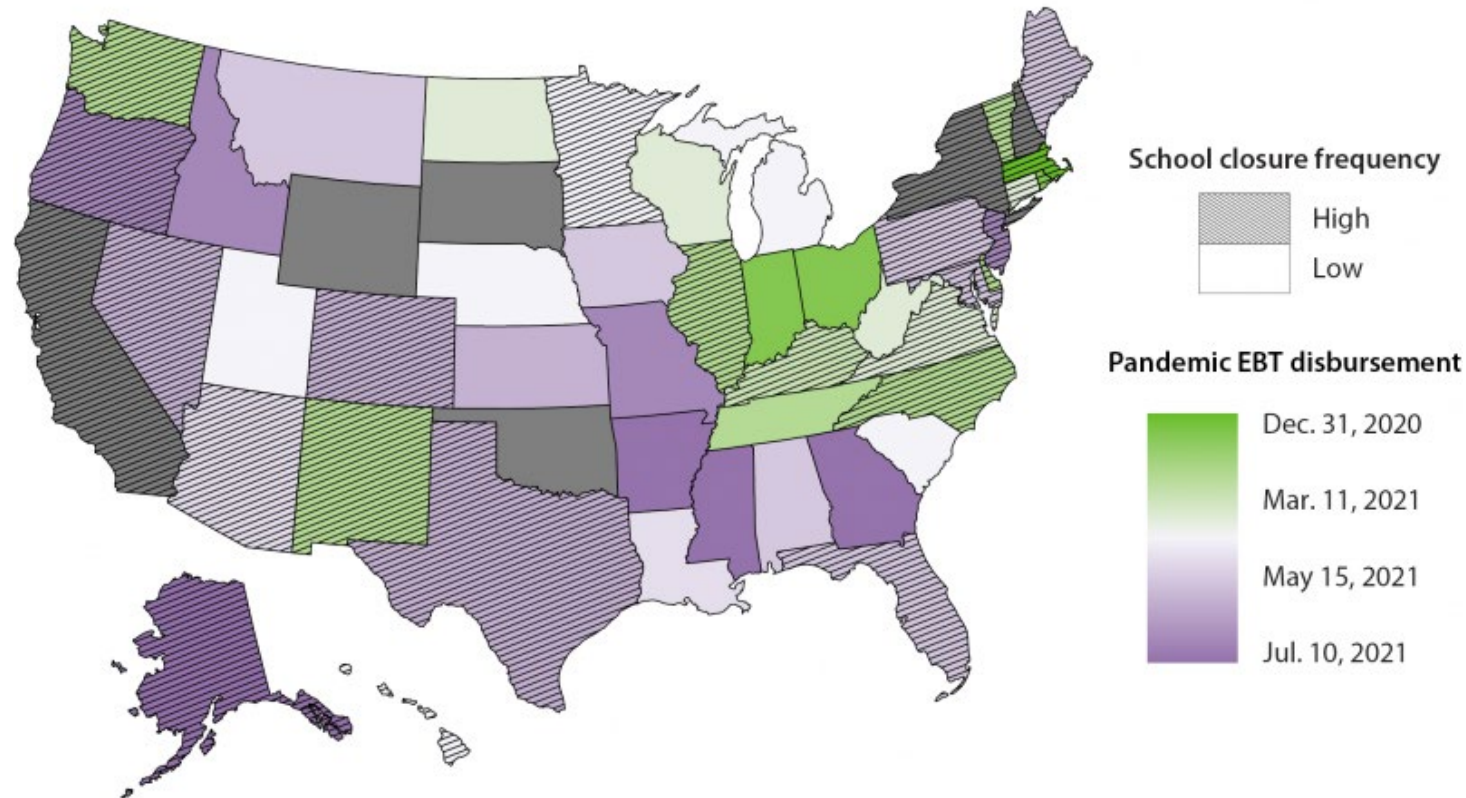
Pandemic EBT Rollout, April 2020 - Present



Pandemic EBT Rollout, 2020 -21 School Year

FIGURE 2.

Date of First Pandemic EBT Disbursement to SNAP Households for the 2020–21 School Year



Source: Authors' correspondence and calculations.

Note: Dates of first disbursement were assigned to their corresponding HPS collection week. States in gray did not begin disbursements prior to week 34 of the HPS.

Pandemic EBT Rollout

$$y_{ist} = \beta PEBT_{st} + X'_{ist} \theta + \gamma_s * t + \eta_s + \delta_t + \epsilon_{ist}$$

Food insecurity;
Sometimes or often
not sufficient food;
Children
sometimes or often
not enough to eat

P-EBT first
disbursement date(s) to
SNAP households, one-
or two-week window

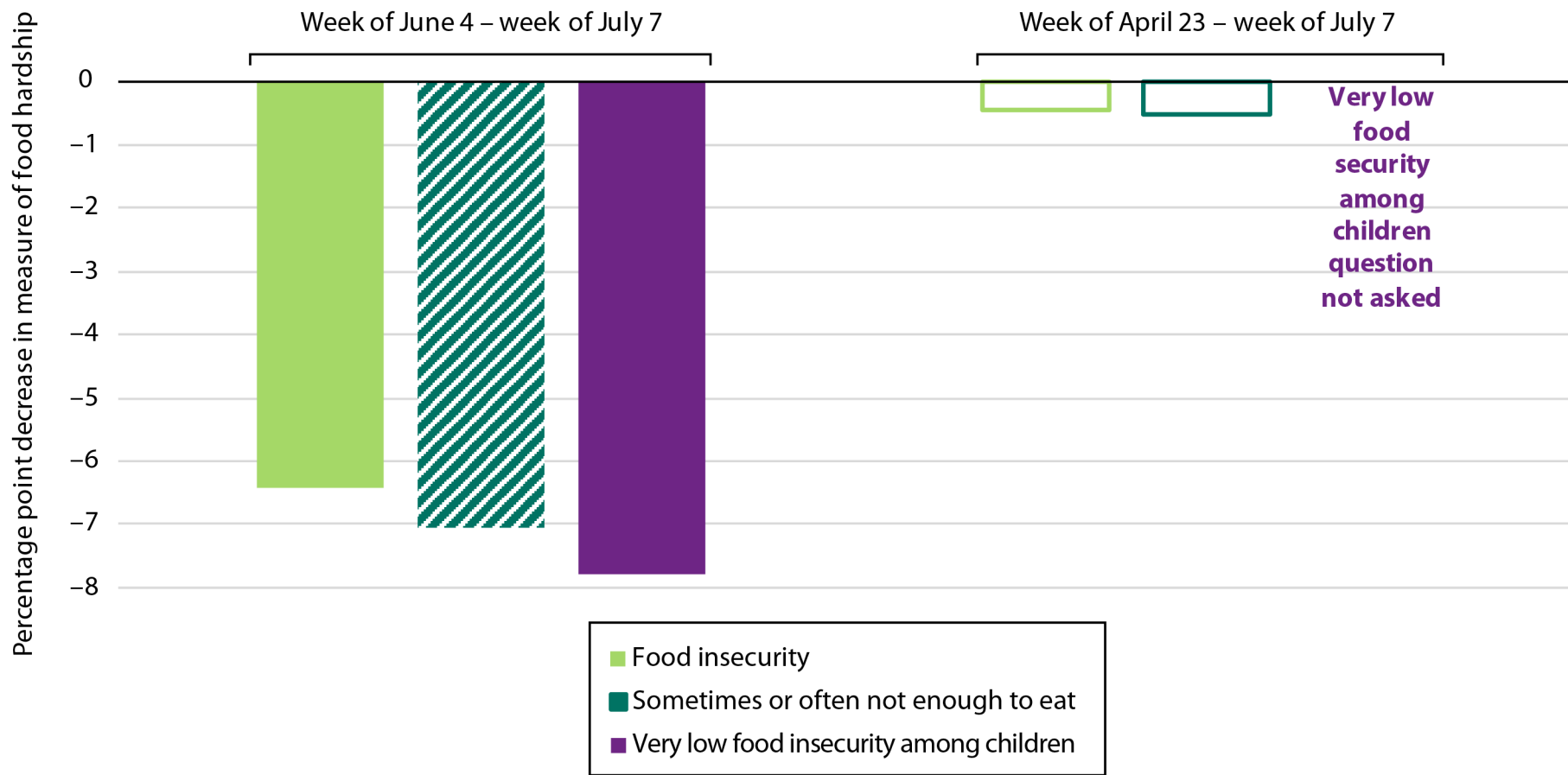
SNAP Emergency
Allotment
disbursements

Age
Race/ethnicity
Educational attainment
Marital status
Employment status
Number of children

Weekly IUR by state

State linear trend
State fixed effects
Week fixed effects

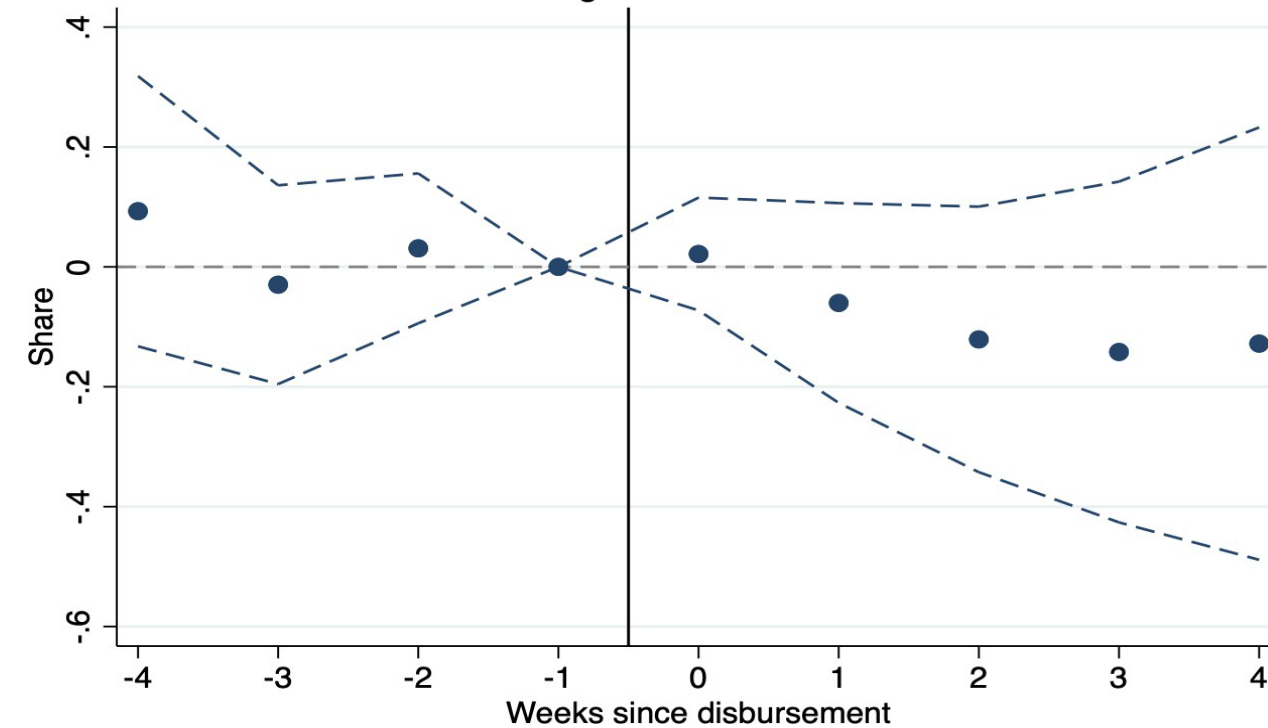
Effect of Pandemic EBT on Food Hardship



Effect of Pandemic EBT on Food Hardship

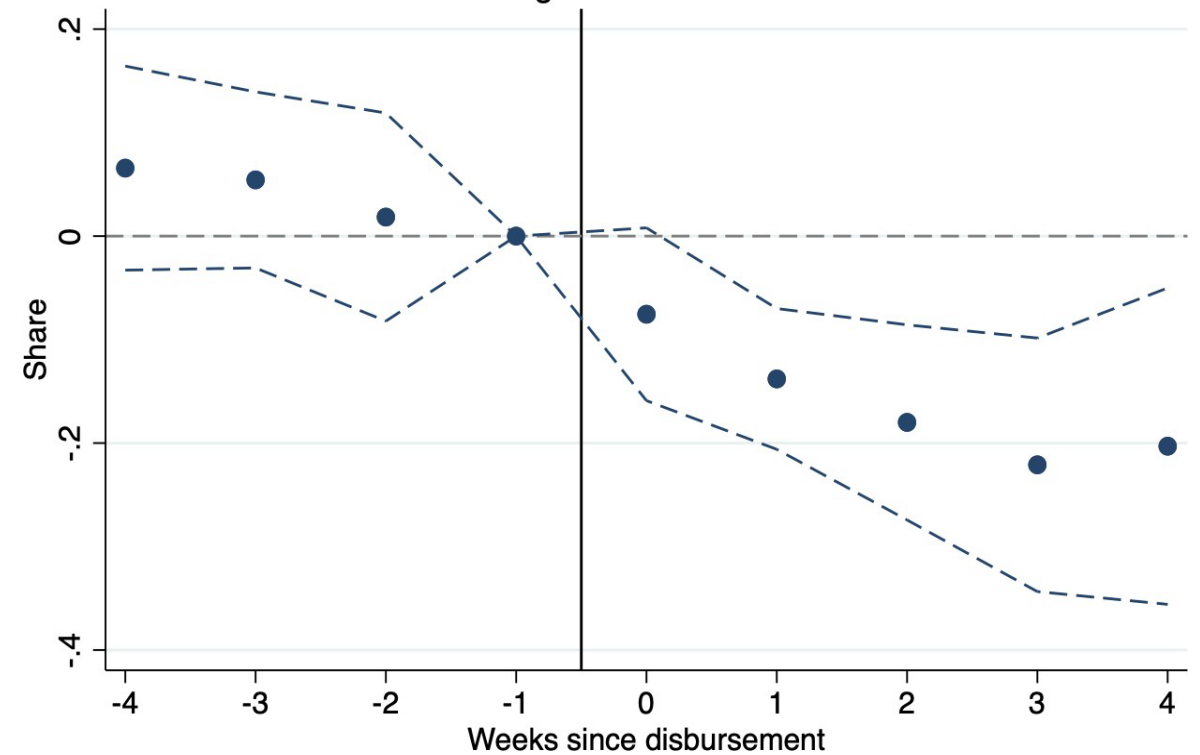
Sometimes/often not enough to eat

High closure states



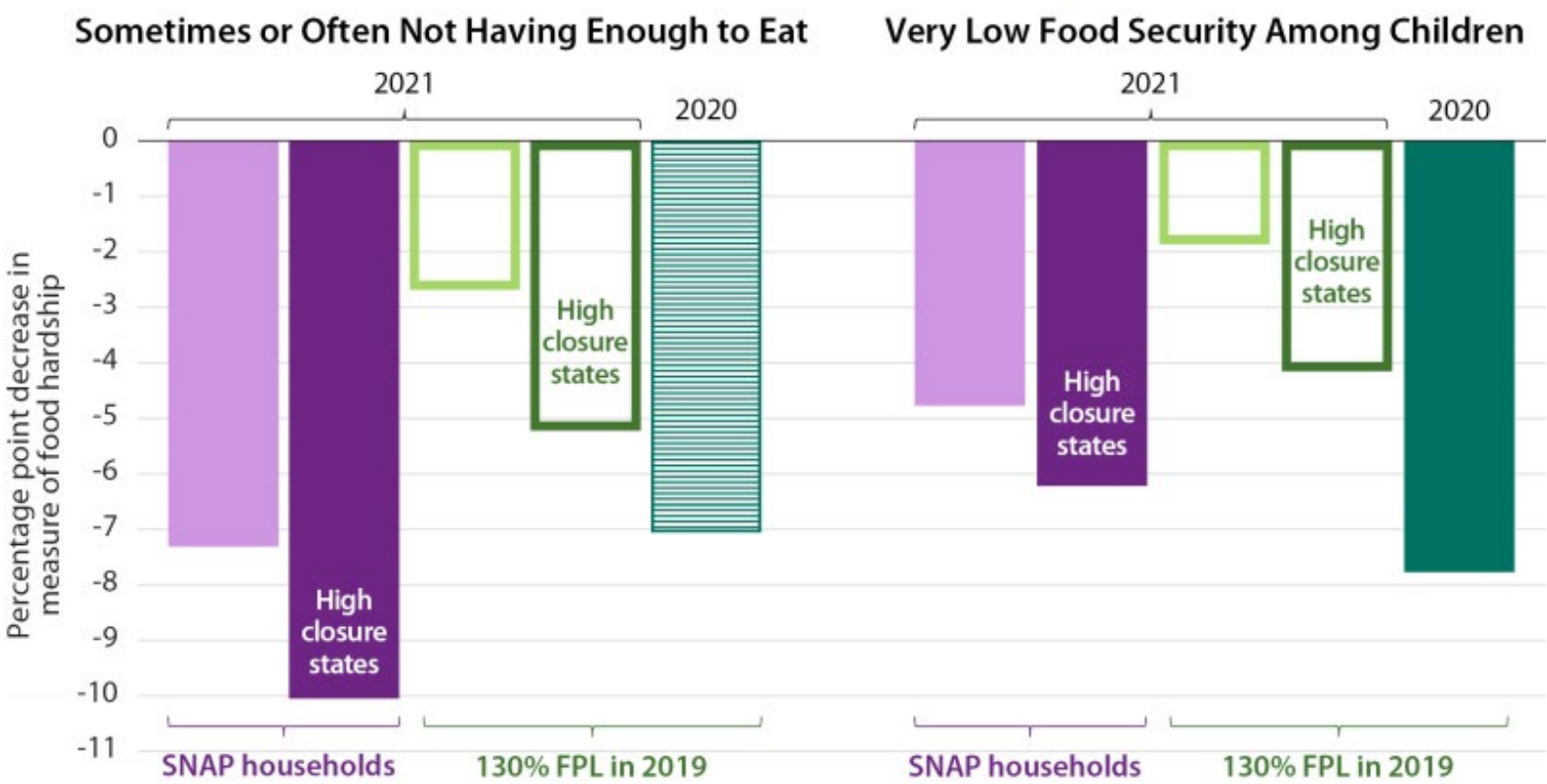
Very low food security, children

High closure states



Effect of Pandemic EBT on Food Hardship

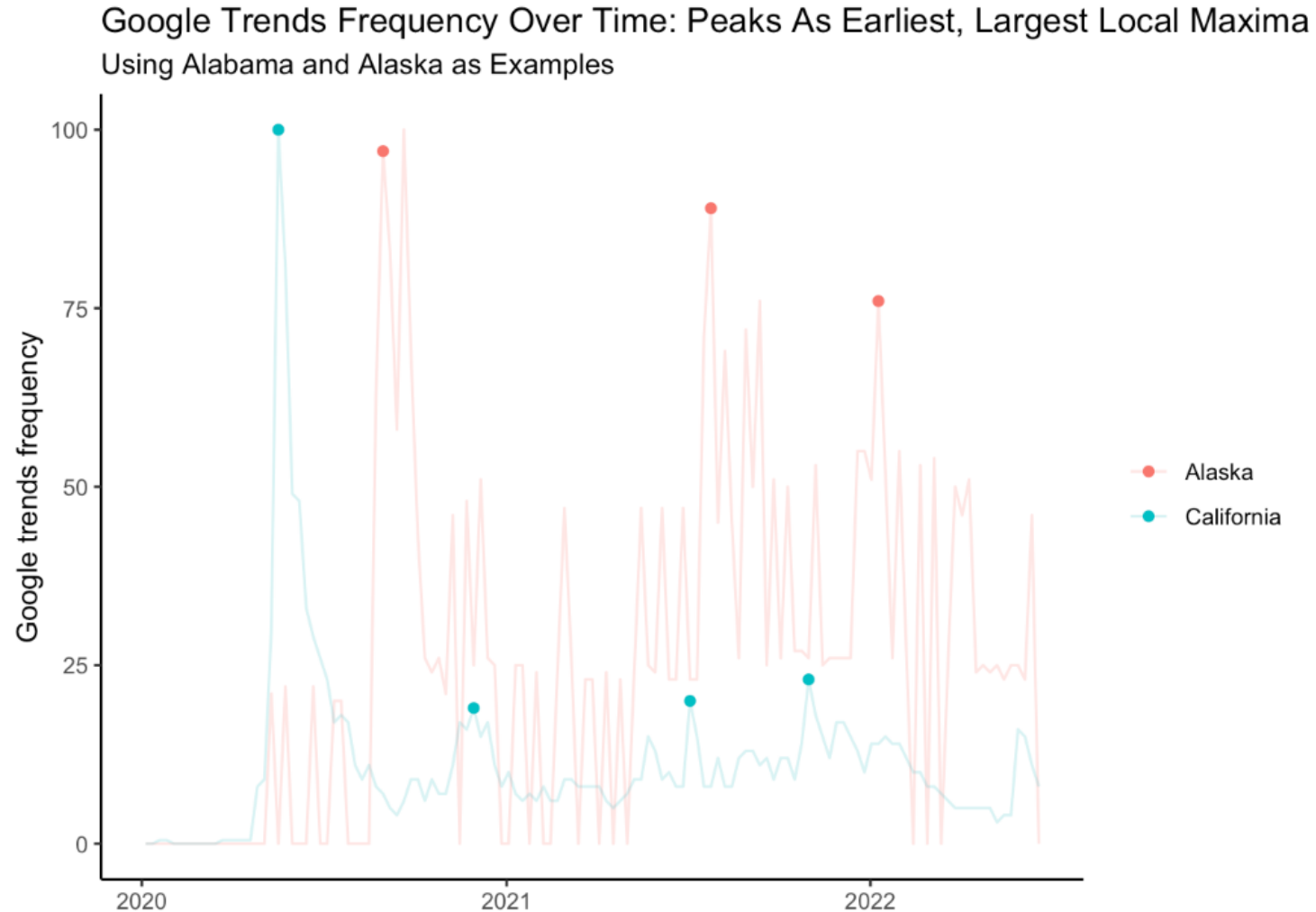
FIGURE 3.
Effect of Pandemic EBT on Measures of Food Hardship

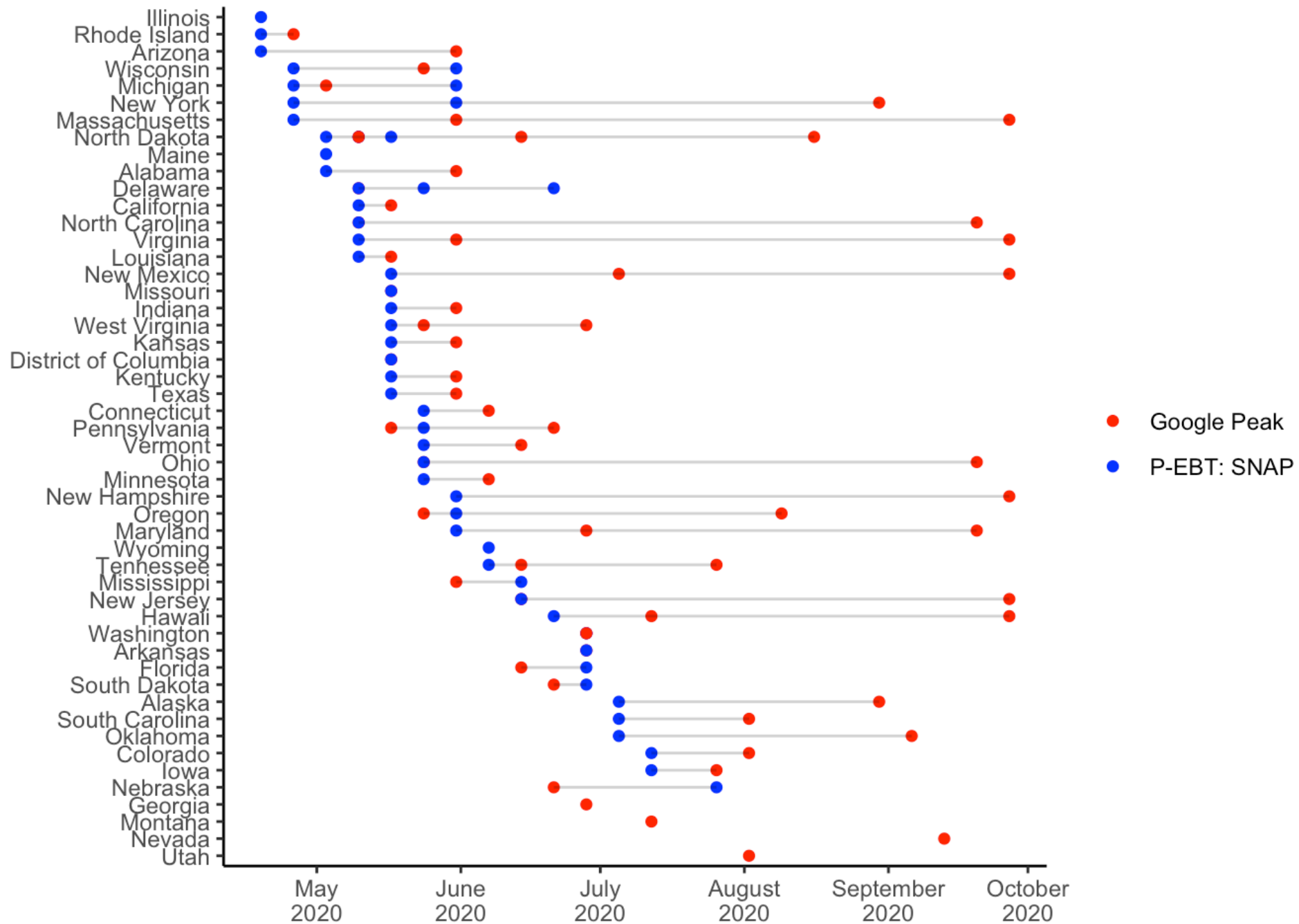


Source: Census Household Pulse Survey 2020; Bauer et al. 2020; authors' calculations.

Note: Hollow bars indicate results that are not statistically significant at the 10 percent level. Solid bars indicate results are significant at the 1 or 5 percent level while striped bars are significant at the 10 percent level. Please refer to the technical appendix for additional details.

Effect of Pandemic EBT on Non-SNAP Households





Go to:

HAMILTONPROJECT.ORG

for all the Pandemic EBT / nutrition assistance resources!

Lauren Bauer

Fellow in Economic Studies | The Hamilton Project | The Brookings Institution

LBAUER@brookings.edu | www.hamiltonproject.org | www.brookings.edu

	Poverty sample			SNAP sample		
	2019-20	2020-21		2020-21		
	All states	All states	High clo- sure states	All states	High closure states	
Panel a: Very low food security among children						
PEBT	-0.0777*** (0.0281)	-0.0177 (0.0215)	-0.0409 (0.0253)	-0.0477** (0.018)	-0.0622*** (0.0219)	
N	13798	18433	11103	23485	15528	
DV mean	0.37	0.3215	0.3245	0.288	0.2825	
Panel b: Sometimes or often not enough to eat						
PEBT	-0.0705* (0.0369)	-0.0282 (0.0286)	-0.0514 (0.0349)	-0.0731*** (0.0229)	-0.1005*** (0.0248)	
N	13881	18509	11149	23553	15573	
DV mean	0.272	0.2967	0.2913	0.2646	0.2551	